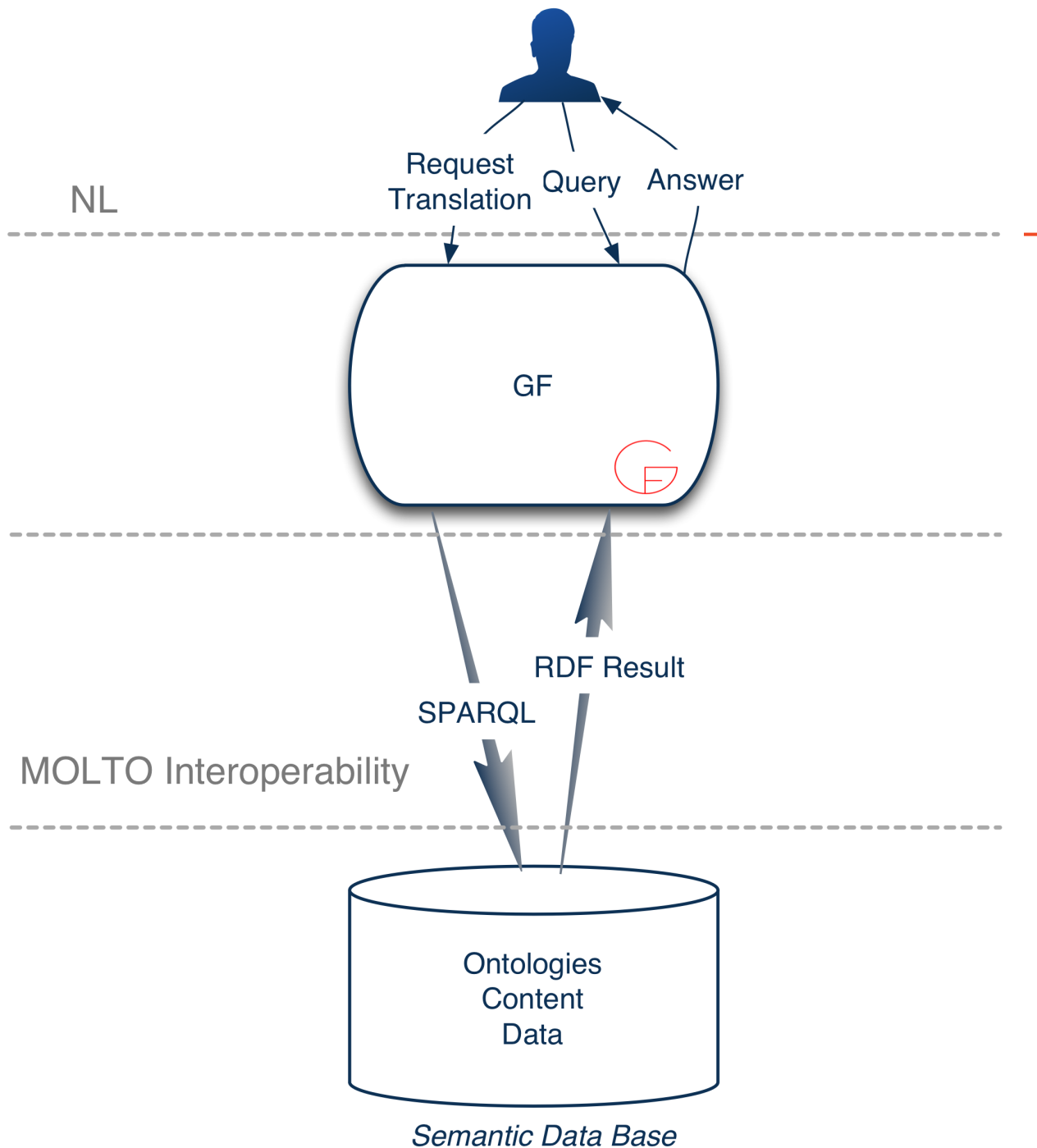




Ontotext Exploitation Perspectives

Borislav Popov

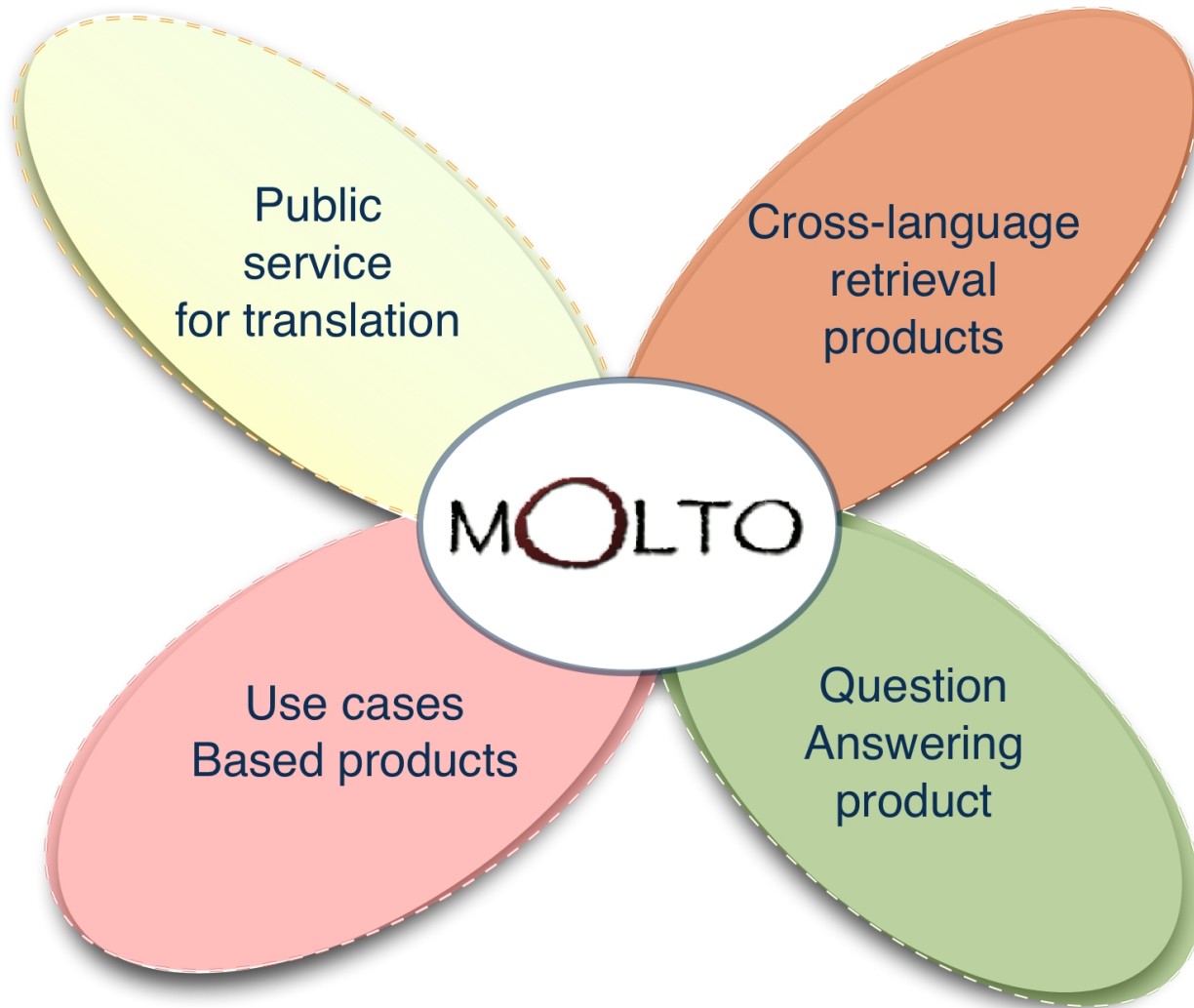


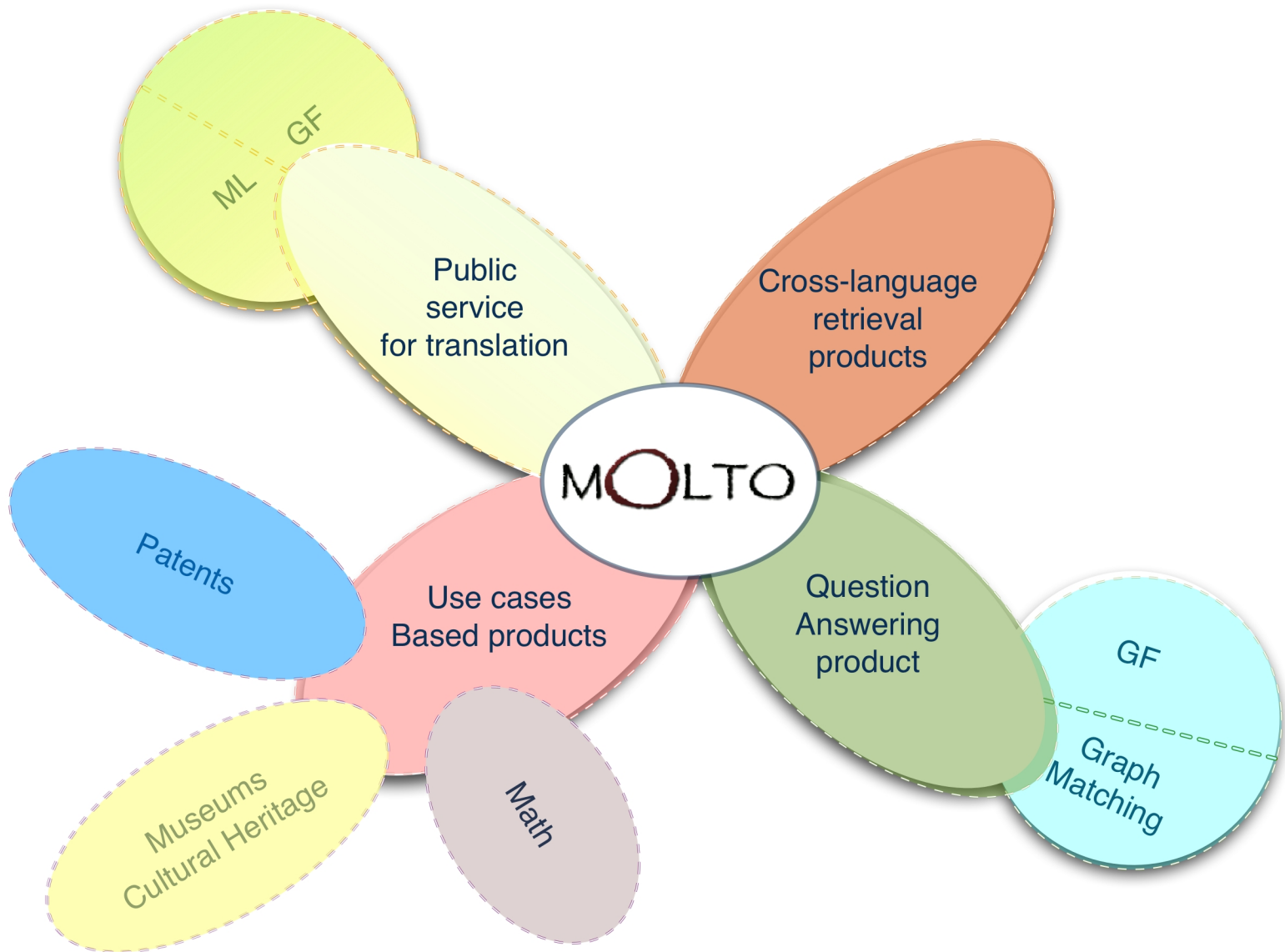


MOLTO: Key Components and Functions

Exploitation Areas

- Productize in the use case domains: Patents, Math, Cultural Heritage
- Productize multilingual semantics based question answering
- Productize cross-language retrieval
- Public Translation Service (GF + ML)





Forms of Cooperation

- Spin off from an academic institution combined with a commercial joint venture
- Licensing of technology/products to one of the commercial partners
- OEM deals with 3rd parties

Patents

- Technology / OEM deal with a top 10 vendor of patent search and management systems
- Additional study is needed to scope business requirements and evaluate them vs MOLTO technological



LexisNexis



THOMSON REUTERS



Ontotext's Exploitation Plans

- Publishers have:
 - **Data**, like vocabularies, taxonomies, thesauri
 - Content assets in **multiple languages**
 - **Readers** in multiple language groups
- On the basis of an existing client base, Ontotext will aim to enrich their client offerings with well **multilingual support and interfaces**

NDP Nieuwsmedia

The Institution of Engineering and Technology

IEE

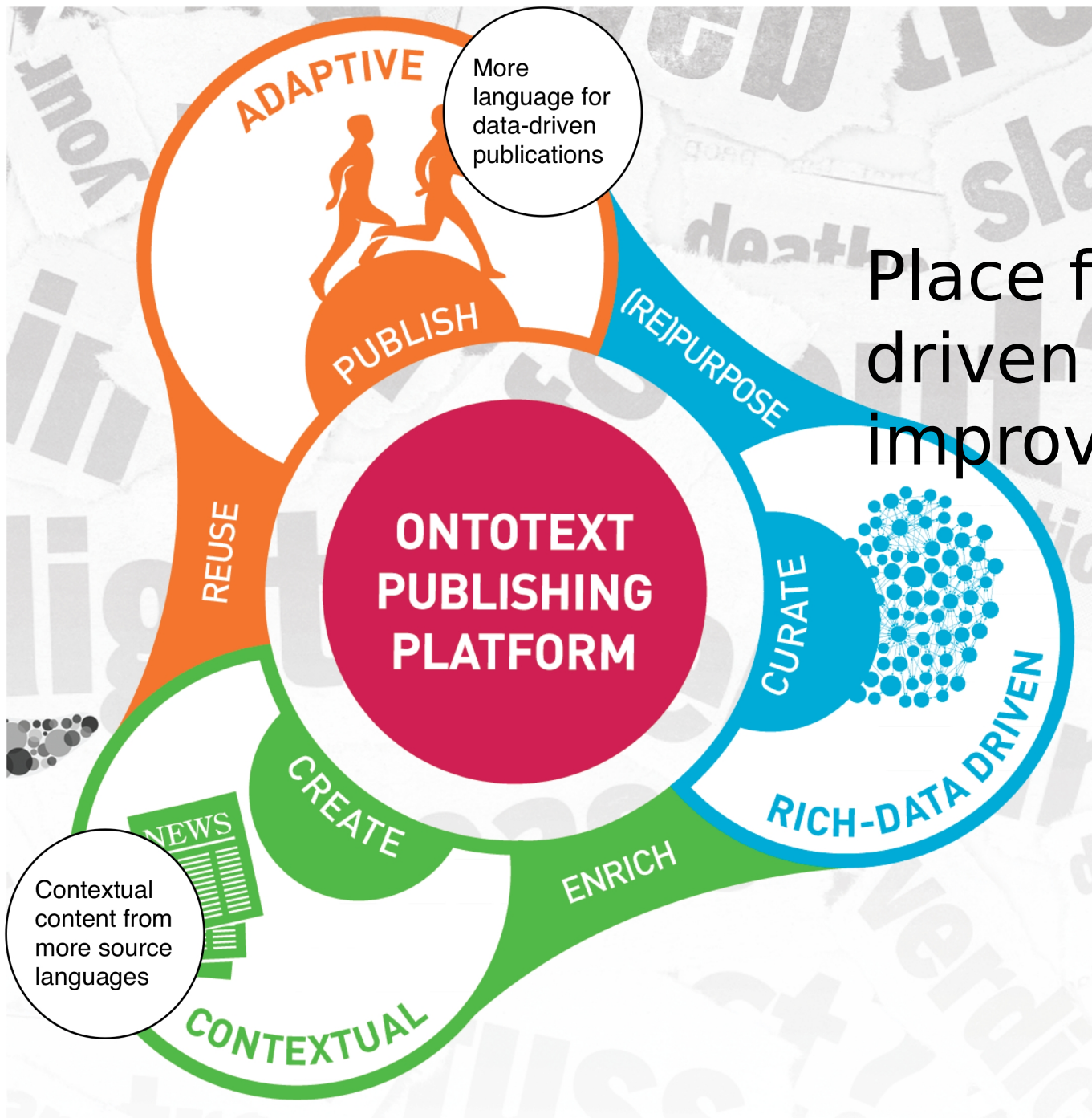
SIEMENS

newz



OXFORD
UNIVERSITY PRESS

ontotext



Place for MOLTO
driven
improvements

Adaptive News App

- Adapt to my interests
- Group & Summarize
- App as an independent asset
- Multilingual features for the Adaptive News App



Ontotext: Cultural Heritage

- **Cross-language retrieval** of artifact descriptions in highly **multilingual environments** to serve **interactive** museum experiences

The British
Museum



 ontotext

Questions?



Thank You!

